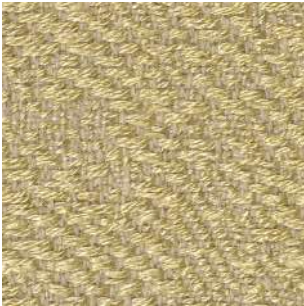


Keiga

SAHCO



242



422



252



762



982



222



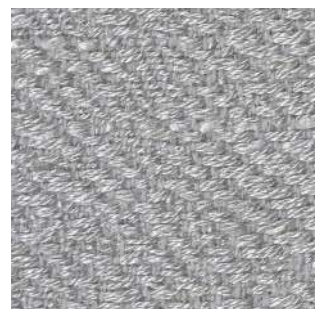
822



112



382



132



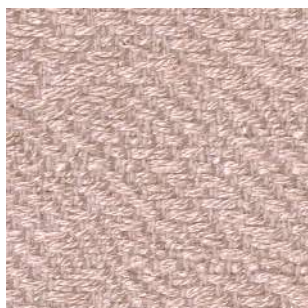
572



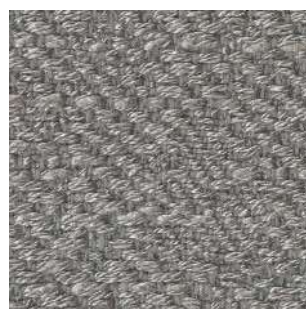
362



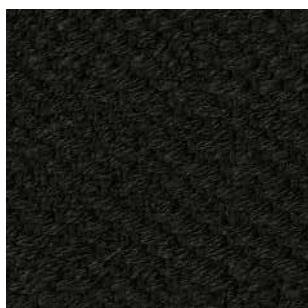
232



622



142



192



182

**Keiga**

Sahco upholstery

38% new wool, 37% viscose, 16% linen, 9% nylon.

Direction: ↔

Width: approx. 140cm (55")

Abrasion: 50,000 Martindale

[Click here for full Technical Specifications.](#)

