

# TERRA

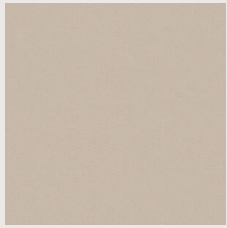
Terra is a new type of innovative high-end leather developed in collaboration with Norm Architects, known for their thoughtful design philosophy that seeks to engage the senses and enrich the quality of life. It's an extremely soft aniline leather featuring a silky-matt surface with a subtle shine and a velvety tactile feel that evokes one's senses, offering a touch of modern sophisticated elegance.

<b>Supplier</b>	Sørensen Leather
<b>Composition</b>	100% Aniline Leather
<b>Martindale</b>	-
<b>Flammability</b>	BS EN 1021-1 and 2, TB 117-2013
<b>Environment</b>	PCP, AZO dyes, Chrome VI, REACH

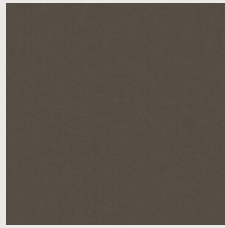
*Please note that the colours not included in NORR11 selection will be quoted individually.*

# TERRA BY SØRENSEN LEATHER

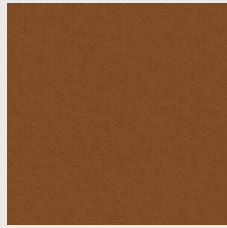
NORR11 SELECTION



TERRA LIME  
20365



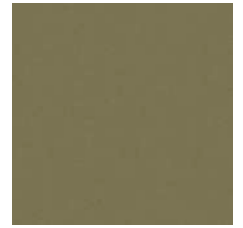
TERRA CLAY  
20370



TERRA SOIL  
20360



TERRA BASALT  
20369



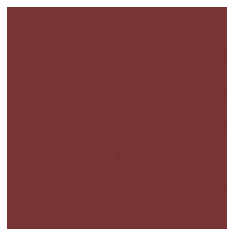
TERRA JADE  
20368



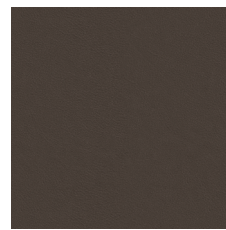
TERRA MARBLE  
20466



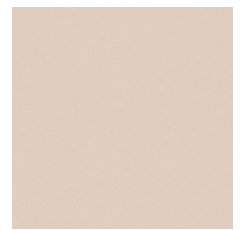
TERRA OCHRE  
20363



TERRA OXIDE  
20362



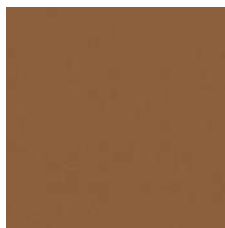
TERRA RAKU  
20367



TERRA SAND  
20364



TERRA SILT  
20371



TERRA UMBER  
20361

NORR11